



ULTRA **BLONDE**

WITH BLONDORPLEX CREAM TONER



THE HAIR CARE

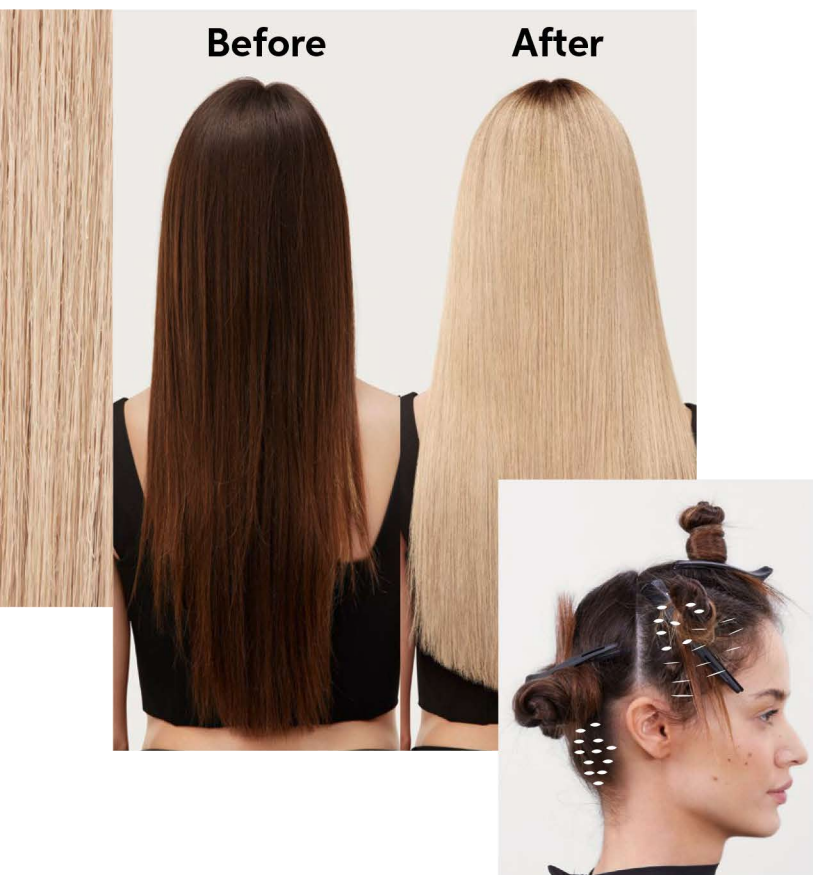
THE BLONDE SERVICES

THE CONSULTATION

THE TREND

WELLA ARTISTS

ULTRA BLONDE



#SELENITEBLONDE

Full head highlights with diffused roots finished with high-speed toner, for silky soft reflections.

Color Formula



Step 1

Lightening

Blondor

30g BlondorPlex, + 45g 1.9% Progressing develop strength up to 9%/30vol, for controlled lift.



Step 2

Blonde toning

BlondorPlex Cream Toner
60g /16 + 120g 1.9%

Color Steps



1 Lightening

Work back-to-back weaves alternating between creating small root and a medium size root, for a diffused regrowth. Lighten all the tip outs in between foils for maximum lightness.



2 Blonde toning

Using an applicator flask for speed, apply toner to damp hair from roots to ends for 5 minutes.



ColorMotion⁺

Color Protection and Strength

- Our best color care line Color Protection, Vibrant Shine, Stronger Hair*
- Up to 8 weeks color protection**
- With WellaPlex blinding agent. For stronger hair*

*when using Structure+ Mask **when using Structure+ Mask vs. no treatment

ULTRA BLONDE

Step 1 Lightening

Work back-to-back fine weaves at hair line close to the root.

At the crown and sides alternate between creating a small root and a medium size root for a diffused regrowth area.

Tip

Use lower strength developer to control lift, increasing developer strength towards crown and top.

During the application, apply to the **tip outs** for high impact lightness. Apply freehand and isolate with a large foil.

After desired lightening is achieved rinse thoroughly and apply **WellaPlex N°2 Bond Stabilizer**, rinse, shampoo and condition.

Step 2 Toning

Using an applicator flask for speed, apply toner to damp hair from roots to ends. Comb through, rinse, shampoo and condition.

