



LIGHT
SCALE

CHARCOAL

10 LIGHT SCALE UP TO

THE NEW CHARCOAL BLEACH PASTE
WITH **LIGHTENING POWER UP TO 10** LEVELS CREATING
THE **PERFECT BLONDE** LEAVING HAIR HEALTHY AND
HYDRATED



500 g Sachet

LIGHT
SCALE

UP TO 10 LEVELS LIGHTER

#CHEWOW:

The wow effect of the dark charcoal bleach paste
vs the absolute blonde results.

Progressive processing time up to 90 minutes.

Can be used with a heat source to accelerate
processing time.

Suitable for all techniques*.

* Closed in foil strips or transparent sheets: no swelling or leaking;
hair stays hydrated. Free-hand: no solidifying or drying when
left uncovered



Charcoal Sugar Complex, a **dual-action** complex of sugars and charcoal.

The **sugars** work on the surface, in the cuticle, **protecting and hydrating the hair throughout the lightening process.**

The **Charcoal**, not only gives the bleaching paste its characteristic black color, it also **neutralises unwanted yellow/orange undertones whilst purifying the hair.**

The combination of the **Charcoal Sugar Complex** and the **Blend of Natural Oils** makes the **formula gentler, leaving hair visibly healthy.**

This **progressive lightening formula** allows processing up to **90 minutes** exceeding the standard maximum processing time of normal bleaches.

CHARCOAL

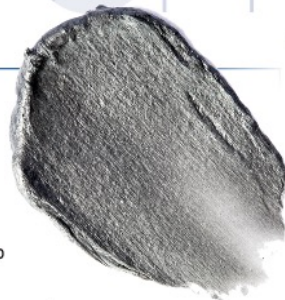
 CHARCOAL SUGAR COMPLEX

It is widely used in skin care, but the properties of this totally **eco-friendly** active ingredient are also perfect for hair care.

Charcoal is a highly porous, odourless and tasteless powder, obtained by burning wood or the shells or stones of fruit.

Its purifying, cleansing, anti-smog and detoxifying properties make it highly versatile and effective in cosmetics.

The same active ingredient is used for whitening teeth and used in many whitening toothpastes.



LIGHTENING PROCESS

1 _____
Massage the sachet every time you use the **product to activate the blend of nourishing oils inside it.**

3 _____
Use in a **dilution ratio of 1:1.5/ 1:2 with 10-20-30 volume developer** based on the fluidity desired and the result you want to achieve.

2 _____
Leave-in time **60-90 minutes. After 40/45 minutes, check the lightening level achieved by rinsing a strand of hair.**

4 _____
If you need to achieve a higher degree of lightening, add a **second application without rinsing the product off.**



5 - TO COMPLETE THE SERVICE

Once the leave-in time has finished, massage with a little water and rinse.

Wash thoroughly with a specific shampoo (**Top Care Color After Color Care Acid Shampoo**) to eliminate any residual traces of oil.

6 - TECHNICAL TIPS

Do not apply the product on ultra-bleached tips to avoid the appearance of grey/iridescent light blue highlights. To prevent the bleaching paste from coming into contact with the tips, we recommend using **Lisaplex™ Hair Structure Filler (*)**.

(*) Lisaplex™ recommends carrying out an accurate diagnosis before any colour removing service and not to use Lisaplex™ if a colour removing service has not been carried out without Lisaplex™.

SUGAR



LIGHT SCALE
UP TO

BLEACH POWDER WITH
THE LIGHTENING POWER UP TO 9 LEVELS
FOR THE PERFECT BLONDE

LIGHT
SCALE



500 g Tin

UP TO 9 LEVELS LIGHTER

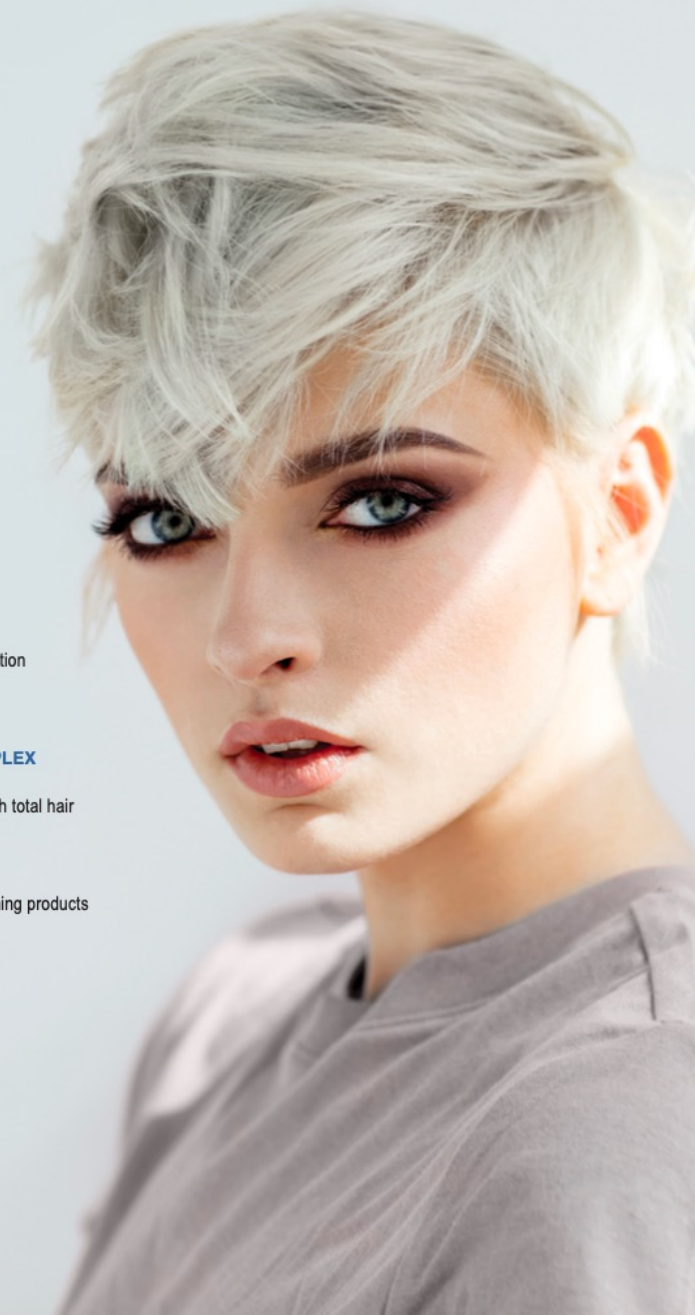
White bleach powder, easier detection
of the tones achieved.

AMMINOSUGAR CARE COMPLEX

To boost the lightening process with total hair
protection.

Acts faster than the average bleaching products
on the market.

Suitable for all techniques.



Amino Sugar Care Complex, a dual-action complex of sugars, amino acids, cysteine and glycine.

The sugar work on the surface, in the cuticle, **to maintain hydration and nourish damaged hair.**

The **amino acids** penetrate into the hair structure preserving the **damaged keratin structure.**

Cysteine and Glycine (*) act inside the keratin bonds to **reinforce the hair and boost the lightening process** for an even better result.

Hair is protected, restructured, reinforced and lightened without damage.

*Present as derivatives in the product.

SUGAR
PROTECTION AND NUTRITION

Cysteine and
Glycine

work within the keratin bonds and capillary structures, strengthening the hair, promoting the lightening process and leaving the hair healthy.



LIGHTENING PROCESS

1 _____

For a safe lightening service, mix **30 g of Light Scale Up-To-9 + 45/60 ml of Developer 10/20/30 Vol.**

3 _____

Once mixed, add **5 ml of Lisaplex™ Bond Saver (*)** to preserve the integrity of the hair's lamellar structure. We recommend a dilution ratio of **1:1.5 or 1:2.**

2 _____

The choice of quantity (**1:1.5 or 1:2**) and the developer volume (10/20/30) depends on the desired texture and target lightening level.

4 _____

The **leave-in time** depends on the desired result of the lightening, for a maximum of **60 minutes.**



5 - TO COMPLETE THE SERVICE

Wash thoroughly with a specific shampoo (**Top Care Color After Care Color Acid Shampoo**) to avoid reactivating the bleaching process. To complete the service, apply 20 ml of **Lisaplex™ Hair Structure Filler*** depending on the hair structure..

6 - TECHNICAL TIPS

Before bleaching, spray the hair with **Lisap Absolute Spray** to rebalance the porosity of the hair and hydrate it without masking the lightening process.

(*) Lisaplex™ recommends carrying out an accurate diagnosis before any colour removing service and not to use Lisaplex™ if a colour removing service has not been carried out without Lisaplex™.

L I G H T S C A L E



MILANO



m&u imports



muiimports_au



imports
Hairdressing and Beauty Supplies

(03) 9555 1533 | sales@muiimports.com.au | www.muiimports.com.au | 662 South Rd, Moorabbin Victoria 3189 Australia



education

